

AGENDA
INTERCITY TRANSIT AUTHORITY
SPECIAL MEETING
June 22, 2011
5:30 P.M.

CALL TO ORDER

- | | | |
|-----------|--|----------------|
| 1) | APPROVAL OF AGENDA | 1 min. |
| 2) | PUBLIC COMMENT
<i>Public Comment Note: This is the place on the agenda where the public is invited to address the Authority on any issue. The person speaking is requested to sign-in on the General Public Comment Form for submittal to the Clerk of the Board. When your name is called, step up to the podium and give your name and address for the audio record. If you are unable to utilize the podium, you will be provided a microphone at your seat. Citizens testifying are asked to limit testimony to three minutes.</i> | 10 min. |
| 3) | PUBLIC HEARING
A. Transportation Improvement Program & Program of Projects
<i>(Bob Holman)</i> | 10 min. |
| 4) | 2011 BICYCLE COMMUTER CONTEST UPDATE <i>(Duncan Green)</i> | 10 min. |
| 5) | PRELIMINARY OCTOBER SERVICES CHANGES <i>(Dennis Bloom)</i> | 30 min. |
| 6) | CITIZEN ADVISORY COMMITTEE APPOINTMENTS <i>(Rhodetta Seward)</i> | 10 min. |
| 7) | MEMBER COMMENTS | 10 min. |
| 8) | MEETING EVALUATION | 5 min. |

ADJOURNMENT

**INTERCITY TRANSIT AUTHORITY
SPECIAL MEETING
AGENDA ITEM NO. 3-A
MEETING DATE: June 22, 2010**

FOR: Intercity Transit Authority
FROM: Bob Holman, ext. 5885
SUBJECT: TIP / POP Public Hearing

-
- 1) **The Issue:** Receive public comment on the 2012 draft Transportation Improvement Program (TIP) and Program of Projects (POP) for Federal Transit Administration funding.

 - 2) **Recommended Action:** Receive and consider public comment on the 2012 TIP and POP for Federal Transit Administration (FTA) funding.

 - 3) **Policy Analysis:** Grant guidelines require we offer the opportunity for a public hearing.

 - 4) **Background:** The draft Transportation Improvement Program (TIP) and Program of Projects (POP) for Federal Transit Administration funding reflect projects from the Intercity Transit 2011-2016 Transportation Development Plan (TDP).

Project elements in the draft plan are:

- Capital Preventive Maintenance for 2012, 2013 and 2014. This is for planning purposes pending adoption of the federal budget for federal fiscal years 2012 through 2014.
- Seven replacement buses: For planning purposes, anticipating funds from one or more FTA grant applications to replace the balance of 1998 coaches still in service.
- Final Engineering & Construction for transit maintenance and operations facility expansion in 2012-2014: This project is for planning purposes in the event a funding request from one or more FTA grant applications is successful.
- TRPC awards of federal 2011 Surface Transportation Program (STP) funding for Bus Stop Enhancements (TE or Transportation Enhancement component of STP), and STP funding for a portion of construction funding for the Olympia Transit Center expansion project.

Thurston Regional Planning Council will move Intercity Transit proposed, federally funded projects through their annual process for updating the Regional Transportation Improvement Program (TIP) and the State Transportation Improvement Program (STIP). The STIP then gets approved by the State and federal transportation agencies as the final step in the process.

5) **Alternatives:** N/A

6) **Budget Notes:** The TIP and POP reflect projects in the current TDP.

7) **Goal Reference:** The project elements support several goals: Goal #2: *“Provide outstanding customer service;”* Goal #3: *“Maintain a safe and secure operating system;”* and Goal #4: *“Provide responsive transportation options.”*

8) **References:** TIP/POP Public Hearing notice.



Date Submitted: May 24, 2011

Contact: Rhodetta Seward, Intercity Transit
(360) 705-5856

Please bill Intercity Transit at the above address for publication of the following notice in the legal section of The Olympian.

**INTERCITY TRANSIT AUTHORITY
NOTICE OF PUBLIC HEARING & SPECIAL MEETING
JUNE 22, 2011
5:30 P.M.**

The Intercity Transit Authority has scheduled a special meeting for June 22, 2011, to conduct a public hearing at 5:30 p.m., on the 2011, 2012 and 2013 elements of the Transportation Improvement Program (TIP) for US Department of Transportation projects for funding under Federal Transit Administration grant programs. The hearing will be conducted at the Intercity Transit administrative office, in the Board Room at 526 Pattison St SE, Olympia 98501 (ADA accessible).

These are projects programmed or anticipated to be funded by the U.S. Department of Transportation. Copies of the draft Transportation Improvement Program for federally funded programs are available during normal business hours at Intercity Transit's offices (360-705-5885) at 526 Pattison St SE, Olympia. Written comments may be submitted to the Grants Program Administrator, Development Dept., Intercity Transit, PO Box 659, Olympia, WA 98507-0659.

The proposed 2012-2014 TIP elements will be final unless modified.

The Capital Preventive Maintenance items are proposed for grant activities under Section Section 5307, Urbanized Area Formula grant program of the Federal Transit Administration. For this program, the State of Washington is the designated recipient, and Intercity Transit the grantee.

PROJECT DESCRIPTION	LOCAL	FEDERAL	TOTAL
I. Capital Projects (80:20 funding)			
1. Capital Preventive Maintenance for 2012 (TIP Project IT1201)	\$720,000	\$2,880,000	\$3,600,000
2. Capital Preventive Maintenance for 2013 (TIP Project IT1301)	\$775,000	\$3,100,000	\$3,875,000
3. Capital Preventive Maintenance for 2014 (TIP Project IT1401)	\$775,000	\$3,100,000	\$3,875,000
4. Final Engineering & Construction for transit maintenance and operations facility expansion 2012-2014 (TIP Project IT1104 & IT1203)	\$4,000,000	\$16,000,000	\$20,000,000
II. Capital Projects (83:17 funding)			
1. Purchase 7 heavy duty, hybrid, diesel-electric replacement buses in 2012 (TIP Project 1202)	\$765,000	\$3,735,000	\$4,500,000
III. Miscellaneous Capital Projects			
1. Olympia Transit Center Expansion - Construction. Carry forward of 2009 earmark grant plus a 2011 Surface Transportation Program grant through TRPC (STP; TIP Project #s IT 903, 1003, 1103)	\$898,000	\$3,485,000	\$4,383,000
2. Bus Stop Enhancements (2011 TE -Transportation Enhancement; Proj # IT1204)	\$240,000	\$60,000	\$300,000
TOTALS	\$8,173,000	\$32,360,000	\$40,533,000

**PUBLISH: Sunday, May 29, 2011
Legal Section**

**INTERCITY TRANSIT AUTHORITY
SPECIAL MEETING
AGENDA ITEM NO. 4
MEETING DATE: June 22, 2011**

FOR: Intercity Transit Authority
FROM: Duncan Green, BCC Assistant, 705-5874
SUBJECT: 2011 Bicycle Commuter Contest Update

-
- 1) **The Issue:** Brief the Intercity Transit Authority on the results of the 2011 Bicycle Commuter Contest.

 - 2) **Recommended Action:** For information and discussion.

 - 3) **Policy Analysis:** The purpose of this presentation is to provide information on the 2011 Thurston County Bicycle Commuter Contest.

 - 4) **Background:** The annual Thurston County Bicycle Commuter Contest (BCC), which ran the full month of May, just completed its 24th year. Staff will present information about this year's event and the results of our most recent efforts.

This is Intercity Transit's sixth year administering this countywide event, coordinated through the Marketing & Communications division. For the third consecutive year, Duncan Green directed the BCC and related efforts as a temporary employee (a six month position). He is assisted by Kris Fransen, lead Intercity Transit staff involved in commute trip reduction activities with commuters and area employers.

Bicycling is a significant element in Thurston County, and Intercity Transit's incorporation of bicycling into its trip reduction and alt mode promotion has been received well. Under the agency's guidance, the program has seen record participation (2008), record sponsorship (2011), and great event attendance and media attention (2011). The BCC broadened and sustained successful partnerships between our agency and the community and generated public goodwill. Intercity Transit was also recognized by APTA with an Ad Wheel Award, a top marketing honor within the public transportation industry, for the Bicycle Commuter Contest.

5) **Alternatives:** N/A

6) **Budget Notes:** The cost of the Bicycle Commuter Contest is largely staff time for one temporary position. The annual budget for the BCC is \$20,000; however, expenditures are usually well under this amount due to sponsorships and in-kind support.

7) **Goal Reference:** Goal #4: *"Provide responsive transportation options;"* and Goal #1: *"Assess the transportation needs of our community."*

8) **References:** N/A

**INTERCITY TRANSIT AUTHORITY
SPECIAL MEETING
AGENDA ITEM NO. 5
MEETING DATE: June 22, 2011**

FOR: Intercity Transit Authority

FROM: Dennis Bloom, Planning Manager, 705-5832

SUBJECT: Preliminary October Service Changes

1) **The Issue:** Staff proposes preliminary route and schedule adjustments to Route 60 and possible service adjustments to both the Dash circulator and weekday Olympia Express service. Effective dates for any changes will be October 2, 2011. Service changes require a public hearing before adoption.

2) **Recommended Action:** For review and discussion and to get direction from the Authority on which service adjustments should be considered for October.

3) **Policy Analysis:** Agency policy requires a public review and comment process occur before the Authority approves proposals that make significant service changes.

4) **Background:** Three routes are being considered for future service adjustments. Route 60, Routes 603/605 (Olympia Express), and the Dash circulator include the following considerations:

Route 60: Operates between Olympia and Lacey and serves both the Lilly Road medical facilities (Olympia) and Panorama City (Lacey). It faces on-time schedule adherence issues. While the number of wheelchair boardings can create timing concerns, the biggest delays are associated with routing:

a) Panorama City: Deviation through private property for only a few daily riders.

St. Francis House: (12th Street, Olympia) Off-route deviation through private property for a few riders.

b) Travel time on the route segment between Lilly Road and the Lacey Transit Center, via Lilly and Pacific Ave.

Olympia Express: Pierce Transit's Board of Directors recently approved eliminating its remaining Olympia Express service, Routes 601 and 602, starting October 3, 2011. They initially reduced service on these routes from eight roundtrips per weekday to four on June 13, 2011. These four roundtrips will

now be eliminated. The loss of PT's service means there will be new bi-directional weekday service gaps affecting Thurston County residents. Staff is reviewing our current Olympia Express schedule to see if adjustments can be made that could fill some of these gaps.

Dash: Service began in January 2006. The Authority discussed this route a number of times over the past two years. Ridership, during the legislative session, remains fairly strong; however, the pattern during non-session time remains weak as does Saturday service after September. Other concerns expressed about the route include current operational expenses and duplication of local service along the Capitol Way corridor. Staff will review options for future service levels.

Public outreach and open houses are anticipated to occur in late June thru much of July. The Authority already approved conducting a public hearing on July 20, 2011, to take comments on the proposed service adjustments. A final review, recommendation, and adoption of those service changes will come before the Authority on August 3, 2011.

5) **Alternatives:** N/A

6) **Budget Notes:** N/A

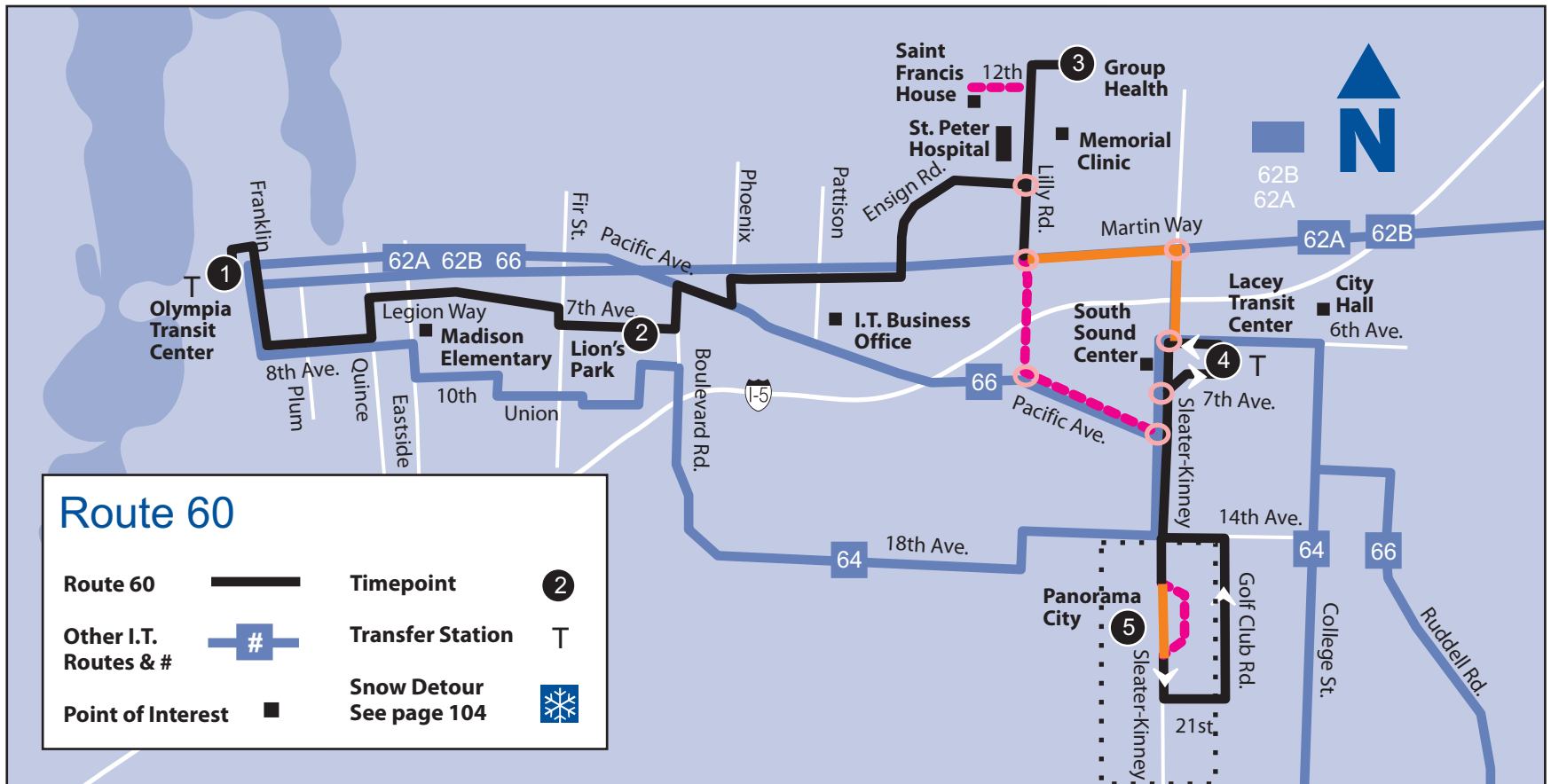
7) **Goal Reference:** Conducting a public hearing for proposed service changes is a set policy of the Authority, which is reflected in Goal#1: *"Assess the transportation needs of our community."*

8) **References:** Proposed timeline for an October Service Change includes:

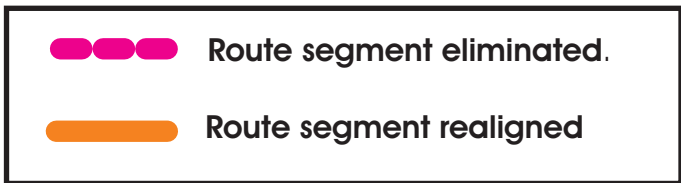
June 1 - ITA:	Request Public Hearing for July 20. <u>Completed</u>
June 20 - CAC:	Provide outline of service change options.
June 22 - ITA:	Provide outline of service change options.
June 27 -	Public information and process begins.
July 20 -	Public Hearing.
August 3 - ITA:	Request Adoption.
October 2 -	Service change implemented.

Attachments: Route 60, Dash and Olympia Express materials

Consideration of Route 60 routing revisions



Updated 6/11



Route 60: Boardings/location of potential routing revisions

Source: Jan-May 2011 APC Data

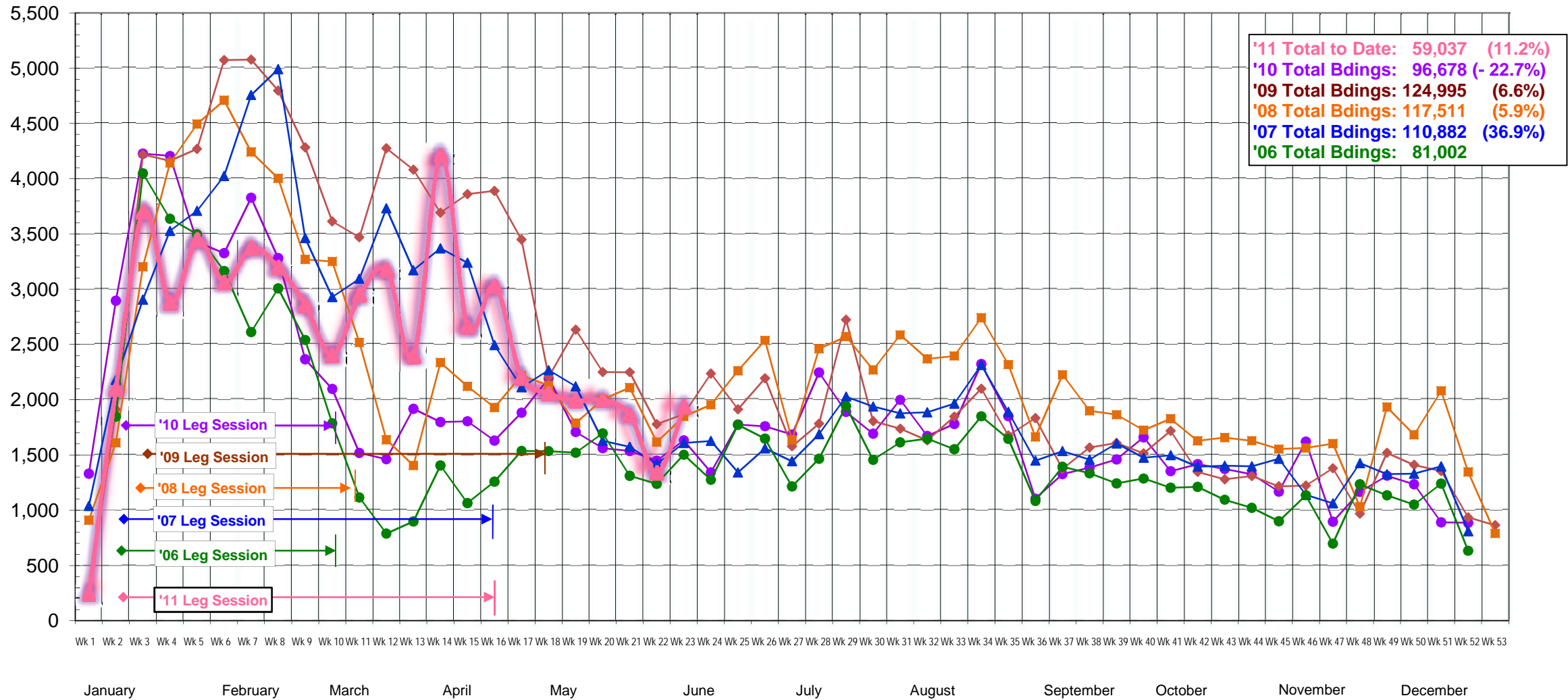
WEEKDAY	Boardings p/Day	% of Total
FULL ROUTE	467	100%
PANORAMA CENTER	7	1.4%
ST. FRANCIS	5	1.1%
LILLY/PACIFIC *	11	2.4%
TOTAL	23	5.0%

SATURDAY	Boardings p/Day	% of Total
FULL ROUTE	216	100%
PANORAMA CENTER	5	1.1%
ST. FRANCIS	6	1.4%
LILLY/PACIFIC *	6	1.3%
TOTAL	18	3.8%

SUNDAY	Boardings p/Day	% of Total
FULL ROUTE	146	100%
PANORAMA CENTER	2	0.5%
ST. FRANCIS	3	0.7%
LILLY/PACIFIC *	4	0.9%
TOTAL	9	2.0%

* From Lilly & Stoll/Griffin to Pacific & South Sound Way.
 The Pacific Avenue stops are served by Route 66.
 The Lilly Road stops are near Route 62A/B or Route 66 service.

Weekly Dash Boardings: 2006 - 2011 Week 23 - 2011



Dash Ridership: Legislative Session, Non-Session, & Saturdays

Year	Session	Dash					Fixed Route				Dash
	Days	Boardings	RSH	VSH	P/RSH	P/Day	Boardings	RSH	P/RSH	P/Day	P/Day%
2006	44	25,949	1,549	1,593	16.8	590	505,461	24,340	20.8	11,488	5.1%
2007	75	50,820	2,794	2,869	18.2	678	944,150	43,311	21.8	12,589	5.4%
2008	45	33,833	1,676	1,721	20.2	752	626,011	27,707	22.6	13,911	5.4%
2009	75	61,192	2,794	2,869	21.9	816	1,168,101	48,563	24.1	15,575	5.2%
2010	45	29,657	1,676	1,721	17.7	659	703,160	29,174	24.1	15,626	4.2%
2011	75	44,672	2,794	2,869	16.0	596	1,171,992	48,889	24.0	15,627	3.8%
	359	246,123	13,283	13,642	18.5	686	5,118,875	221,983	23.1	14,259	4.8%

2011 totals through May 31, 2011

Year	Non-Session	Dash					Fixed Route				Dash
	Days	Boardings	RSH	VSH	P/RSH	P/Day	Boardings	RSH	P/RSH	P/Day	P/Day%
2006	206	49,207	7,251	7,457	6.8	239	2,246,782	118,491	19.0	10,907	2.2%
2007	180	51,959	6,697	6,877	7.8	289	2,161,883	103,913	20.8	12,010	2.4%
2008	211	74,561	7,860	8,071	9.5	353	3,044,089	135,333	22.5	14,427	2.4%
2009	181	55,067	4,913	5,043	11.2	304	2,497,112	115,445	21.6	13,796	2.2%
2010	212	58,869	5,328	5,470	11.0	278	2,977,457	134,212	22.2	14,045	2.0%
2011	31	10,211	779	800	13.1	329	494,237	19,893	24.8	15,943	2.1%
	1021	299,874	32,828	33,717	9.1	294	13,421,560	627,287	21.4	13,146	2.2%

2011 totals through May 31, 2011

Year	Saturday	Dash [Apr-Dec]					Fixed Route [Apr-Dec]				Dash
	Days	Boardings	RSH	VSH	P/RSH	P/Day	Boardings	RSH	P/RSH	P/Day	P/Day%
2006	38	5,902	602	627	9.8	155	213,778	11,646	18.4	5,626	2.8%
2007	38	7,599	602	627	12.6	200	240,817	12,023	20.0	6,337	3.2%
2008	38	8,843	602	627	14.7	233	296,468	13,160	22.5	7,802	3.0%
2009	37	8,688	586	611	14.8	235	273,887	12,928	21.2	7,402	3.2%
2010	38	8,152	602	627	13.5	215	282,175	13,168	21.4	7,426	2.9%
2011	8	1,968	127	132	15.5	246	70,128	3,195	22.0	8,766	2.8%
	197	41,152	3,119	3,251	13.2	209	1,377,253	66,120	20.8	6,991	3.0%

2011 totals through May 31, 2011

Dash Totals by Year							
Year	Service Days	Boardings	RSH	VSH	P/RSH	P/Day	% Change
2006	288	81,058	9,402	9,677	8.6	281	---
2007	293	110,378	10,092	10,373	10.9	377	36.90%
2008	294	117,237	10,138	10,419	11.6	399	5.90%
2009	293	124,947	8,292	8,523	15.1	426	6.60%
2010	295	96,678	7,606	7,818	12.7	328	-22.70%
2011	114	56,851	3,700	3,801	15.4	499	-12.10%
	1577	587,149	49,229	50,610	11.9	372	

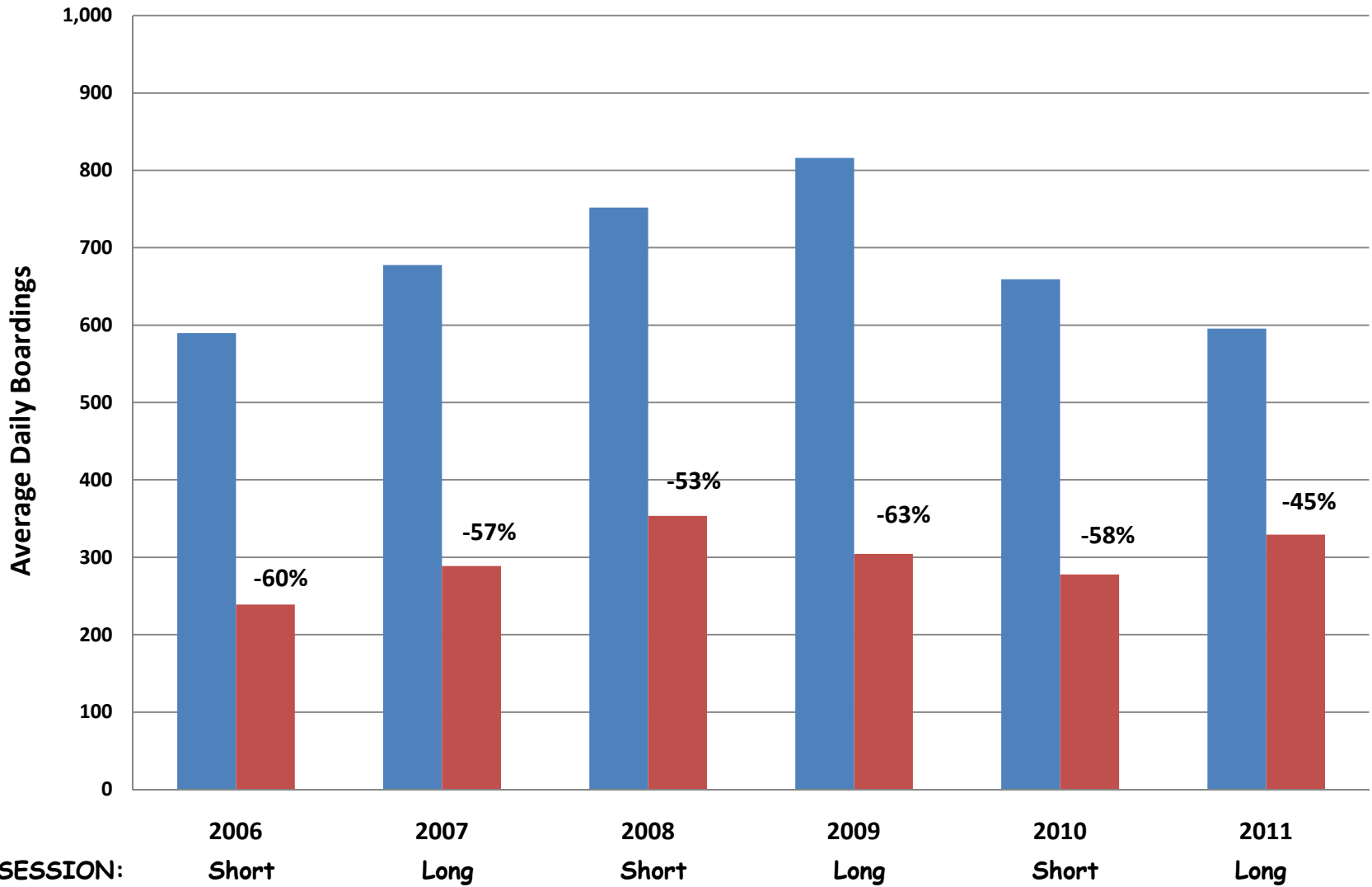
Short Session
Long
Short
Long
Short
Long

Performance Indicators
RSH = Revenue Service Hours
P/RSH = Passengers per RSH
P/Day = Passengers per Day

2011 totals through May 31, 2011

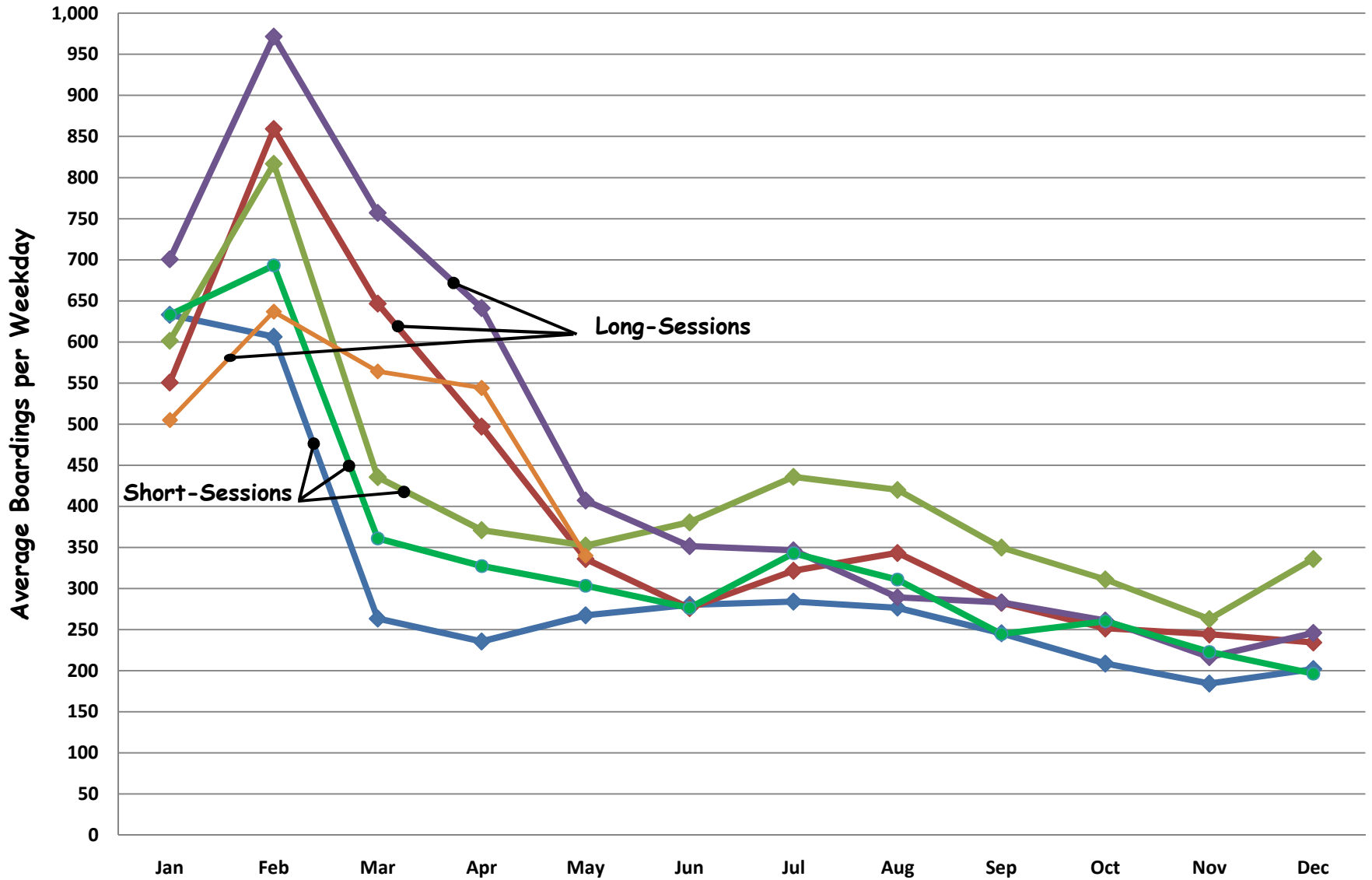
Weekday Dash - Average Daily Boardings: Session vs Non-Session

■ Session ■ Non-Session



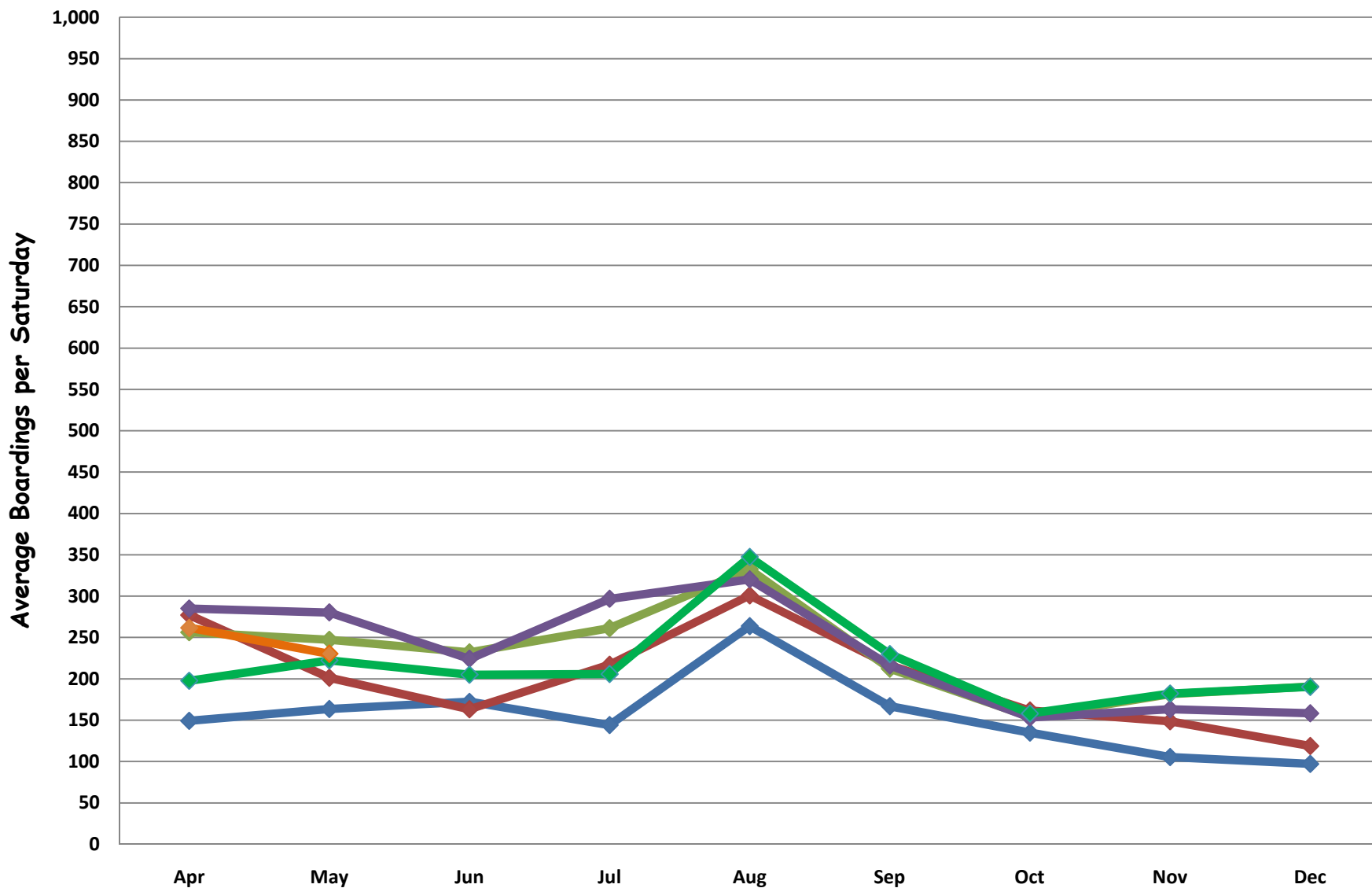
Dash - Weekdays: Average Daily Boardings by Month

2006 2007 2008 2009 2010 2011



Dash - Saturdays: Average Daily Boardings by Month

2006 2007 2008 2009 2010 2011



Olympia Express: Consideration of Options for Pierce Transit's Service Elimination

Based on Pierce Transit's (PT) recent announcement to eliminate the 4 remaining roundtrips on Olympia Express weekday service in October, Intercity Transit staff has been reviewing options for schedule adjustments.

As of the June 13, 2011, Pierce Transit now only operates 8 trips on weekdays (4 in each direction) down from the previous 16 trips they had operated for many years. Current trips:
Route 601: Two round trips between Gig Harbor/Tacoma/Lakewood/Olympia.
Route 602: Two round trips each direction between Tacoma/Lakewood/Lacey/Olympia.

Given the upcoming loss of service in October, residents of Thurston and Pierce Counties that utilizing PT's Olympia Express service may be hard pressed to find other commuting options. We will continue to work with PT staff to find commute alternatives, like vanpools and carpools, but anticipate Intercity Transit's Olympia Express Routes 603 and 605 will also be impacted by these reductions.

Service options for Intercity Transit to consider

- a) No change. Do not adjust or add service to compensate for loss of PT service.
- b) Adjust current IT trip schedule to fill major service gaps created by the loss of PT service.
- c) Provide back-up buses for overcrowded Intercity Transit trips.
Consideration of fleet availability would need to be resolved.
- d) Consider future increase in Intercity Transit's Olympia Express service for 2012 or later, depending on financial reserves and customer demand.

As previously discussed with the Authority, we will continue to monitor ridership and service between Thurston and Pierce Counties. The intent is to assess schedule and ridership needs in serving stops in Lakewood and downtown Tacoma.

Timeline for a October 2, 2011, Service Change

<u>June 22:</u>	Authority reviews service options, provides direction for public review process. If additional Olympia Express service is pursued then the following dates would apply:
<u>June 27 – July 20:</u>	Public review process,
<u>July 20:</u>	Public Hearing – includes Olympia Express service
<u>Aug 3:</u>	ITA Adoption.
<u>Oct 2:</u>	Service Change

Olympia Express Trips and Boardings

Pierce Transit Service Reduction Oct 3, 2011

NORTHBOUND (To Lakewood/Tacoma)

Nr	Agency	Route	Start	Location	End	Location	Av Bdings per trip*
1	IT	605	5:15 A	MW P&R	6:05 A	Tacoma	16
2	IT	605	5:40 A	MW P&R	6:30 A	Tacoma	8
3	IT	605	5:40 A	OTC	6:50 A	Tacoma	15
4	IT	605	6:10 A	OTC	7:20 A	Tacoma	23
5	IT	605	6:30 A	OTC	7:40 A	Tacoma	24
6	PT	602	7:00 A	OTC	7:55 A	Tacoma	27
7	IT	605	7:35 A	OTC	8:45 A	Tacoma	18
8	PT	602	8:00 A	OTC	8:55 A	Tacoma	12
9	IT	605	9:00 A	OTC	10:10 A	Tacoma	28
10	IT	605	10:30 A	OTC	11:40 A	Tacoma	32
11	IT	603	12:00 P	OTC	1:10 P	Tacoma	22
12	IT	603	1:30 P	OTC	2:40 P	Tacoma	28
13	IT	603	3:00 P	OTC	4:10 P	Tacoma	29
14	IT	603	4:05 P	OTC	5:25 P	Tacoma	40
15	PT	601	4:15 P	OTC	5:33 P	Gig Harbor	23
16	IT	605	4:35 P	LTC	5:40 P	Tacoma	18
17	IT	603	4:35 P	OTC	5:55 P	Tacoma	36
18	IT	603	5:05 P	OTC	6:25 P	Tacoma	31
19	PT	601	5:25 P	OTC	6:43 P	Gig Harbor	16
20	IT	603	5:35 P	OTC	6:45 P	Tacoma	26
21	IT	603	6:30 P	OTC	7:40 P	Tacoma	15
22	IT	603	7:30 P	OTC	8:30 P	Tacoma	17
All Trips							505
IT Trips							427
PT Trips							78

* Jan-May 2011 Data, except for new IT trips that started June 13 (shaded blue).

PT = Weekday trip to be cut

} 30 = span of minutes until next trip

Olympia Express Trips and Boardings

Pierce Transit Service Reduction Oct 3, 2011

SOUTHBOUND (To Lacey/Olympia)

Nr	Agency	Route	Start	Location	End	Location	Av Bdings per trip*
1	PT	601	5:36 A	Gig Harbor	6:50 A	OTC	17
2	IT	603	6:10 A	Tacoma	7:20 A	OTC	35
3	PT	601	6:31 A	Gig Harbor	7:49 A	OTC	24
4	IT	603	6:45 A	Tacoma	7:55 A	OTC	32
5	IT	605	6:50 A	Tacoma	7:48 A	LTC	14
6	IT	603	7:05 A	Tacoma	8:15 A	OTC	27
7	IT	603	7:35 A	Tacoma	8:45 A	OTC	23
8	IT	603	8:05 A	Tacoma	9:15 A	OTC	14
9	IT	603	9:05 A	Tacoma	10:15 A	OTC	19
10	IT	603	10:30 A	Tacoma	11:40 A	OTC	19
11	IT	603	11:55 A	Tacoma	1:10 P	OTC	23
12	IT	605	1:25 P	Tacoma	2:45 P	OTC	28
13	PT	602	2:54 P	Tacoma	4:02 P	OTC	28
14	IT	605	3:10 P	Tacoma	4:30 P	OTC	20
15	PT	602	3:51 P	Tacoma	4:55 P	OTC	22
16	IT	605	4:30 P	Tacoma	6:00 P	OTC	28
17	IT	605	5:30 P	Tacoma	6:55 P	OTC	31
18	IT	605	6:00 P	Tacoma	7:15 P	OTC	18
19	IT	605	6:40 P	Tacoma	7:55 P	OTC	17
20	IT	605	7:10 P	Tacoma	8:25 P	OTC	12
21	IT	605	8:00 P	Tacoma	9:15 P	OTC	15
22	IT	603	8:50 P	Tacoma	10:00 P	OTC	15

All Trips	480
IT Trips	390
PT Trips	90

* Jan-May 2011 Data, except for new IT trips that started June 13 (shaded blue).

PT = Weekday trip to be cut

} 30 = span of minutes until next trip

Preliminary Weekday Olympia Express Options <i>Service Change: Oct 2, 2011</i>		One-Way Trips [IT]	Peak Coaches [IT Only]	Annual VSH [IT only]	Estimated Annual Cost [IT only]
		CURRENT SERVICE			
Current Express Service	Intercity Transit: 36 one-way trips using 6 buses. Trips originate and terminate in Thurston County. Pierce Transit: 8 one-way trips using 2 buses. Trips originate and terminate in Pierce County. <i>(these trips are being discontinued as of Oct 2)</i>	36	6	13,995	\$1,189,596
NEW SERVICE OPTIONS		ADDED SERVICE			
Unfilled PT Service	<i>These trips cannot be replaced by IT without additional vehicles :</i> Northbound: 7:00 am (602 - 27 riders), 5:25 pm (601 - 16 riders) Southbound: 5:36 am (601 - 17 riders), 6:31 am (601 - 24 riders)				
Northbound (1)	Add 8:15 am (IT 605 - from Olympia Transit Center to Tacoma) Purpose: Fills northbound gap at 8:00a (PT 602 - 12 daily riders)	1	0	553	\$46,963
Northbound (2)	Extend current 4:35 pm from the LTC to start at 4:15p at the OTC (IT 605). Purpose: Fills northbound gap created at 4:15 pm (PT 601 - 23 daily riders) End in Tacoma (not Gig Harbor).	0	0	85	\$7,225
Southbound (1)	Add combination of North - 2 (above) <u>and</u> add new 2:35 pm southbound trip from Tacoma using same bus. Purpose: Fills large southbound gap at 2:54p (PT 602 trip - 28 daily riders)	1	0	595	\$50,575
Southbound (2)	Add 3:50 pm from Tacoma (IT 605). Purpose: Fills southbound gap at 3:51p (PT 602 trip - 22 daily riders)	1	0	595	\$50,575
Total Potential New Service		3	0	1,828	\$155,338
Opt for NB and SB Service	Replace one-way deadhead travel with roundtrips: Northbound: 1:00 and 2:15 pm from Olympia Transit Center Southbound: 9:45 am from Tacoma	3	0	680	\$57,800

Note: All totals are annualized. Actual totals for 2011 calendar year would be about 25% of the totals shown here.

Per hour cost used for estimate>

\$85

Intercity Transit

Oct 2011 Potential New Service

NORTHBOUND

Option	Route	Leaves Olympia Transit Ctr.	Capitol & 11th	Lacey Transit Center	Martin Way Park & Ride	Lakewood Station	SR512 Park & Ride	Tacoma Dome Station	Tacoma 10th & Commerce
	605	---	---	---	5:15	5:37	5:40	5:55	6:05
	605	---	---	---	5:40	6:02	6:05	6:20	6:30
	605	5:40	5:44	5:55	6:00	6:27	6:30	---	6:50
	605	6:10	6:14	6:25	6:30	6:57	7:00	---	7:20
North - 1	605	6:30	6:34	6:45	6:50	7:17	7:20	---	7:40
	605	7:35	7:39	7:50	7:55	8:22	8:25	---	8:45
	605	8:15	8:19	8:30	8:35	9:02	9:05	---	9:25
	605	9:00	9:04	9:15	9:20	9:47	9:50	---	10:10
(Opt)	605	10:30	10:34	10:45	10:50	11:17	11:20	---	11:40
	603	12:00	12:05	---	---	12:42	12:45	1:00	1:10
	603	1:00	1:05	---	---	1:42	1:45	2:00	2:10
	603	1:30	1:35	---	---	2:12	2:15	2:30	2:40
(Opt)	603	2:15	2:20	---	---	2:57	3:00	3:15	3:25
	603	3:00	3:05	---	---	3:42	3:45	4:00	4:10
	603	4:05	4:10	---	---	4:57	5:00	5:15	5:25
	605	4:15	4:20	4:35	---	5:12	5:15	5:30	5:40
North - 2	603	4:35	4:40	---	---	5:27	5:30	5:45	5:55
	603	5:05	5:10	---	---	5:57	6:00	6:15	6:25
	603	5:35	5:40	---	---	6:17	6:20	6:35	6:45
	603	6:30	6:35	---	---	7:12	7:15	7:30	7:40
	603	7:30	7:35	---	---	8:07	8:10	8:25	8:35

SOUTHBOUND

Option	Route	Tacoma 10th & Commerce	Tacoma Dome Station	SR512 Park & Ride	Lakewood Station	Martin Way Park & Ride	Lacey Transit Ctr.	Capitol & 11th	Arrives Olympia Transit Ctr.
	603	6:10	6:17	6:35	6:37	---	---	7:15	7:20
	603	6:45	6:52	7:10	7:12	---	---	7:50	7:55
	605	6:50	6:57	7:15	7:17	---	7:48	---	---
	603	7:05	7:12	7:30	7:32	---	---	8:10	8:15
(Opt)	603	7:35	7:42	8:00	8:02	---	---	8:40	8:45
	603	8:05	8:12	8:30	8:32	---	---	9:10	9:15
	603	9:05	9:12	9:30	9:32	---	---	10:10	10:15
	603	9:45	9:52	10:10	10:12	---	---	10:50	10:55
South - 1	603	10:30	10:37	10:55	10:57	---	---	11:35	11:40
	603	11:55	12:02	12:20	12:22	---	---	1:05	1:10
	605	1:25	---	1:50	1:52	2:20	2:27	2:35	2:45
	605	2:35	---	3:00	3:02	3:30	3:37	3:45	3:55
South - 2	605	3:10	---	3:35	3:37	4:05	4:12	4:20	4:30
	605	3:50	---	4:15	4:17	4:45	4:55	5:05	5:15
	605	4:30	---	4:55	4:57	5:30	5:40	5:50	6:00
	605	5:30	---	5:55	5:57	6:25	6:35	6:45	6:55
	605	6:00	---	6:25	6:27	6:50*	6:57	7:05	7:15
	605	6:40	6:47	7:05	7:07	7:30	7:37	7:45	7:55
	605	7:10	7:17	7:35	7:37	8:00	8:07	8:15	8:25
	605	8:00	---	8:25	8:27	8:50	8:57	9:05	9:15
	605	8:50	---	9:10	9:12	9:35	9:42	9:50	10:00

Preliminary Service Options: No additional buses. Trips added to fill time gaps created by eliminated PT service.

Note: Options (Opt) are dependent upon North and Southbound trips being added first.

12 Jun 2011 Schedules

NORTHBOUND

SOUTHBOUND

Agency	Route	Leaves Olympia Transit Ctr.	Capitol & 11th	Lacey Transit Center	Martin Way Park & Ride	Lakewood Station	SR512 Park & Ride	Tacoma Dome Station	Tacoma 10th & Commerce	TCC Transit Center	Narrows Park & Ride	Kimball Dr Park & Ride	Agency	Route	Kimball Dr Park & Ride	Narrows Park & Ride	TCC Transit Ctr.	Tacoma 10th & Commerce	Tacoma Dome Station	SR512 Park & Ride	Lakewood Station	Martin Way Park & Ride	Lacey Transit Ctr.	Capitol & 11th	Arrives Olympia Transit Ctr.
IT	605	---	---	---	5:15	5:37	5:40	5:55	6:05	---	---	---	PT	601	5:36	5:46	5:50	---	---	6:10	6:12	---	---	6:45	6:50
IT	605	---	---	---	5:40	6:02	6:05	6:20	6:30	---	---	---	IT	603	---	---	---	6:10	6:17	6:35	6:37	---	---	7:15	7:20
IT	605	5:40	5:44	5:55	6:00	6:27	6:30	---	6:50	---	---	---	PT	601	6:31	6:41	6:45	---	---	7:05	7:07	---	---	7:44	7:49
IT	605	6:10	6:14	6:25	6:30	6:57	7:00	---	7:20	---	---	---	IT	603	---	---	---	6:45	6:52	7:10	7:12	---	---	7:50	7:55
IT	605	6:30	6:34	6:45	6:50	7:17	7:20	---	7:40	---	---	---	IT	605	---	---	---	6:50	6:57	7:15	7:17	---	7:48	---	---
PT	602	7:00	---	---	7:12	7:32	7:35	---	7:55	---	---	---	IT	603	---	---	---	7:05	7:12	7:30	7:32	---	---	8:10	8:15
IT	605	7:35	7:39	7:50	7:55	8:22	8:25	---	8:45	---	---	---	IT	603	---	---	---	7:35	7:42	8:00	8:02	---	---	8:40	8:45
PT	602	8:00	---	---	8:12	8:32	8:35	---	8:50	---	---	---	IT	603	---	---	---	8:05	8:12	8:30	8:32	---	---	9:10	9:15
IT	605	9:00	9:04	9:15	9:20	9:47	9:50	---	10:10	---	---	---	IT	603	---	---	---	9:05	9:12	9:30	9:32	---	---	10:10	10:15
IT	605	10:30	10:34	10:45	10:50	11:17	11:20	---	11:40	---	---	---	IT	603	---	---	---	10:30	10:37	10:55	10:57	---	---	11:35	11:40
IT	603	12:00	12:05	---	---	12:42	12:45	1:00	1:10	---	---	---	IT	603	---	---	---	11:55	12:02	12:20	12:22	---	---	1:05	1:10
IT	603	1:30	1:35	---	---	2:12*	2:15	2:30	2:40	---	---	---	IT	605	---	---	---	1:25	---	1:50	1:52	2:20	2:27	2:35	2:45
IT	603	3:00	3:05	---	---	3:42	3:45	4:00	4:10	---	---	---	PT	602	---	---	---	2:54	---	3:20	3:22	3:47	---	---	4:02
IT	603	4:05	4:10	---	---	4:57	5:00	5:15	5:25	---	---	---	IT	605	---	---	---	3:10	---	3:35	3:37	4:05	4:12	4:20	4:30
PT	601	4:15	4:20	---	---	4:57	5:00	---	---	5:18	5:21	5:33	PT	602	---	---	---	3:51	---	4:13	4:15	4:40	---	---	4:55
IT	605	---	---	4:35	---	5:12	5:15	5:30	5:40	---	---	---	IT	605	---	---	---	4:30	---	4:55	4:57	5:30	5:40	5:50	6:00
IT	603	4:35	4:40	---	---	5:27	5:30	5:45	5:55	---	---	---	IT	605	---	---	---	5:30	---	5:55	5:57	6:25	6:35	6:45	6:55
IT	603	5:05	5:10	---	---	5:57	6:00	6:15	6:25	---	---	---	IT	605	---	---	---	6:00	---	6:25	6:27	6:50*	6:57	7:05	7:15
PT	601	5:25	5:30	---	---	6:07	6:10	---	---	6:28	6:31	6:43	IT	605	---	---	---	6:40	6:47	7:05	7:07	7:30	7:37	7:45	7:55
IT	603	5:35	5:40	---	---	6:17	6:20	6:35	6:45	---	---	---	IT	605	---	---	---	7:10	7:17	7:35	7:37	8:00	8:07	8:15	8:25
IT	603	6:30	6:35	---	---	7:12	7:15	7:30	7:40	---	---	---	IT	605	---	---	---	8:00	---	8:25	8:27	8:50	8:57	9:05	9:15
IT	603	7:30	7:35	---	---	8:07	8:10	8:25	8:35	---	---	---	IT	605	---	---	---	8:50	---	9:10	9:12	9:35	9:42	9:50	10:00

CURRENT OLYMPIA EXPRESS SCHEDULE: 22 trips in each direction.

Trips **highlighted** will be elimination by Pierce Transit, effective 2 Oct 2011.

Annual service levels for current IT-operated Olympia Express service:

Coaches:	6
Vehicle Service Hours:	13,995
Cost:	\$1,189,596

**INTERCITY TRANSIT AUTHORITY
SPECIAL MEETING
AGENDA ITEM NO. 6
MEETING DATE: June 22, 2011**

FOR: Intercity Transit Authority
FROM: Rhodetta Seward, Executive Services Director (705-5856)
SUBJECT: Citizen Advisory Committee Appointments

1) **The Issue:** Consider recommendations of the ad hoc committee for Citizen Advisory Committee appointments.

2) **Recommended Action:**

- A. Appoint *Charles Richardson and Matthew Connor* to 1-year terms as youth members of the CAC, with terms beginning July 1, 2011, and ending June 30, 2012.
- B. Appoint *Michael Van Gelder* to a term beginning July 1, 2011, ending June 30, 2013. This will complete a term vacated by Seema Gupta.
- C. Appoint *Carl See and Sreenath Reddy Gangula* to three year terms beginning July 1, 2011, and ending June 30, 2014.

3) **Policy Analysis:** As per the Operating Principles, the Intercity Transit Authority appoints members to the Citizen Advisory Committee.

4) **Background:** At the direction of the Intercity Transit Authority, an ad hoc committee formed to conduct interviews of ten applicants for the youth and adult positions on the Citizen Advisory Committee. Interviews took place on June 8, 2011. Eight of the ten candidates interviewed. Councilmember Ed Hildreth chaired the ad hoc committee, which consisted of Hildreth, *Virgil Clarkson, Joan O'Connell, Gerald Abernathy, Faith Hagenhofer and staff member Erin Scheel*. Upon conclusion of the interviews, the group deliberated applicants and is bringing their recommendation to the Authority for consideration for appointment.

The ad hoc committee took into consideration the remaining composition of the CAC and considered the needs of the CAC members and community. After completing the interviews, they reviewed the qualifications of the applicants and each ad hoc committee member shared their views on each applicant.

It is the recommendation of the committee to appoint two youth, *Charles Richardson and Matthew Connor*. The Authority approved one youth position for a 1-year term. However, the applicants were outstanding, and the members felt

it would be very beneficial to have these two youths serve together in this first year.

The committee's second recommendation is to have *Michael Van Gelder* complete the last two years of *Seema Gupta's* term, and then appoint *Carl See and Sreenath Reddy Gangula* to the two, 3-year terms.

The committee did not form a list of those candidates not selected.

5) Alternatives:

- A. Make appointments as recommended which brings the CAC up to their maximum of 20 members.
- B. Recommend other applicants from the pool of candidates.
- C. Defer appointments.
- D. Recommend staff conduct another recruitment.

6) Budget Notes: No further costs unless a second recruitment is desired.

7) Goal References: Appointment of new members to the CAC meets Goal #1: *"Assess the transportation needs of our community."*

8) References: List of terms, effective with appointments.

**TERMS
CITIZEN ADVISORY COMMITTEE
INTERCITY TRANSIT
June 22, 2011**

2009-2012

Gerald Abernathy
Wilfred Collins
Joan O'Connell
Valerie Elliott
Jackie Reid
Faith Hagenhofer

2011-2014

Meta Hogan
Rob Workman
Roberta Gray
Carl See
Sreenath Reddy Gangula

2010-2013

Don Melnick
Julie Hustoft
Michael Van Gelder
Catherine Golding
Stephen Abernathy
Jill Geyen
Kahlil Sibree

Youth 2011-2012

Charles Richardson
Matthew Connor